



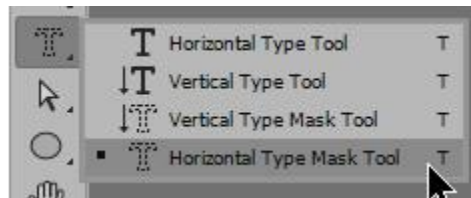
## Create a fun Title with a Text Mask

A Type Mask can be a helpful tool when creating layout titles or other text. The Mask allows the area of an image to show through the text, creating an interesting effect.

For this tutorial, I am using [Photoshop CC2017](#); however, the Type Mask is also available in other versions of Photoshop. It is also available in Photoshop Elements (PSE), although it works slightly differently in that program.

### In Photoshop:

- Click on the Horizontal Type Mask. It is nested with the other Type Tools.



- In the top Options Bar, choose the Font Name and Size that you want to type with.
- Click on your image and type your title. The words you type will appear masked in red.



- Prior to hitting ENTER, position your text where you would like it to be. Once you're satisfied with its placement, hit ENTER or click on the checkmark in the Options Bar to commit. The text will appear as a selection.



- Hit CTRL + J to copy the selection. The selection will be placed on its own layer.
- Add a Drop-Shadow to selection, and you have a nice title on your image. I really like this technique because it adds an unobtrusive, yet attractive, title to your image.



If you would like a more dramatic title, you can take just a few more steps to accomplish that.

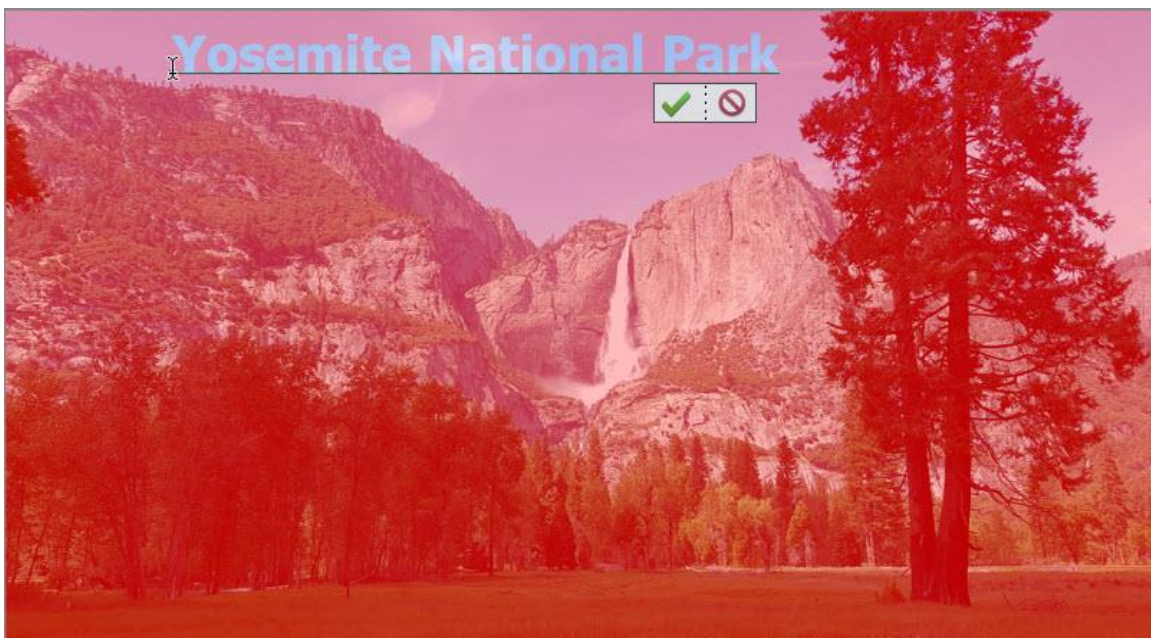
- Add a layer of white beneath your image.

- Lower the opacity of your image to about 50%, or whatever looks good to you.
- Follow the instructions above to create your title and position it where you want.
- Add a drop shadow to your title. I also added a small, white, inside Stroke.



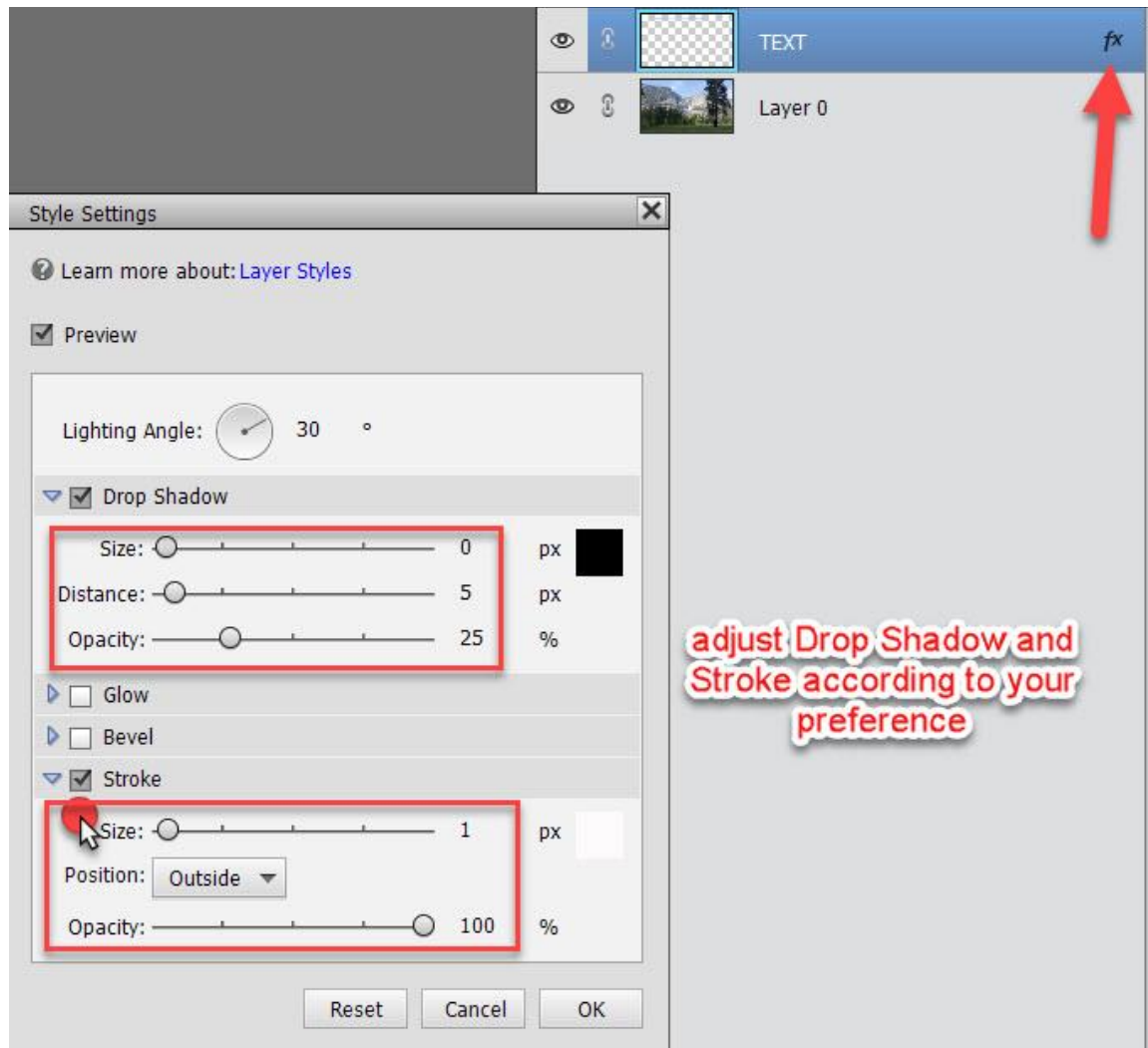
### **In Photoshop Elements:**

The difference between Photoshop and Photoshop Elements is that in Photoshop, the text itself will be masked. In Elements, the entire document will be masked. When you hit ENTER in PSE, the red mask will disappear, and you will be left with the text selected, as in Photoshop.



If you would like to try example 2, follow the instructions above to get the duplicated text layer.

- Click on Styles (underneath the Layers Panel) and add a Drop Shadow.
- Go to the Layers Panel, and click on the FX on the text layer to open the Style Settings.
- Add your Stroke as desired.



Experiment with Text Masking, and I'll bet you can come up with even more creative titles!

I hope you have enjoyed this tutorial!

Karen Schulz  
[SnickerdoodleDesigns](http://SnickerdoodleDesigns.com)

